

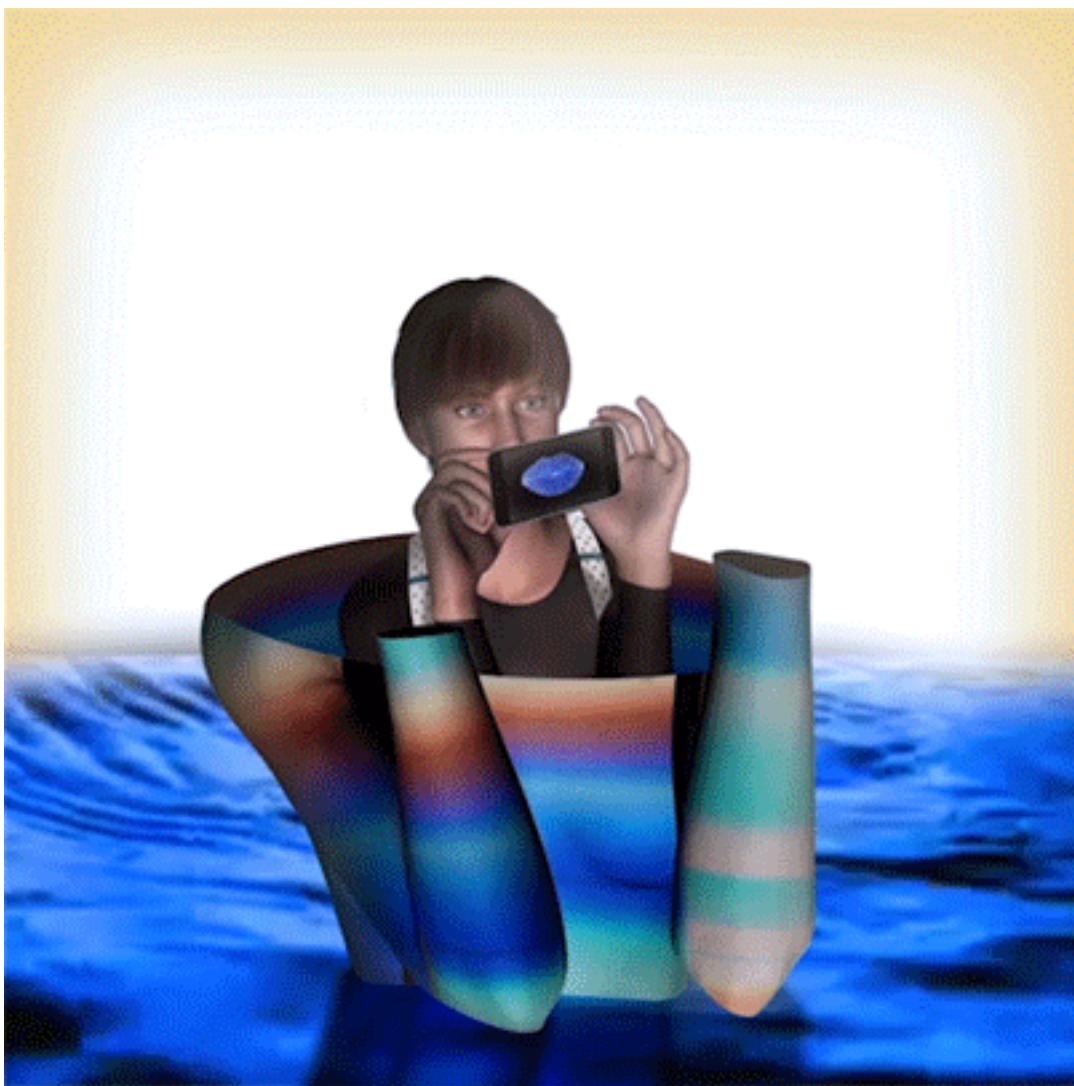


Upon Emergent Occasions

Using 21st Century representational technologies, Brooklyn-based artist Carla Gannis tells stories through a “digital looking glass”, where reflections on power, sexuality, marginalization, and agency emerge. She is fascinated by digital semiotics and the situation of identity in the blurring contexts of the real and the virtual.

A single artwork / Carla Gannis June 17, 2016

Carla Gannis WomanIsland GIF

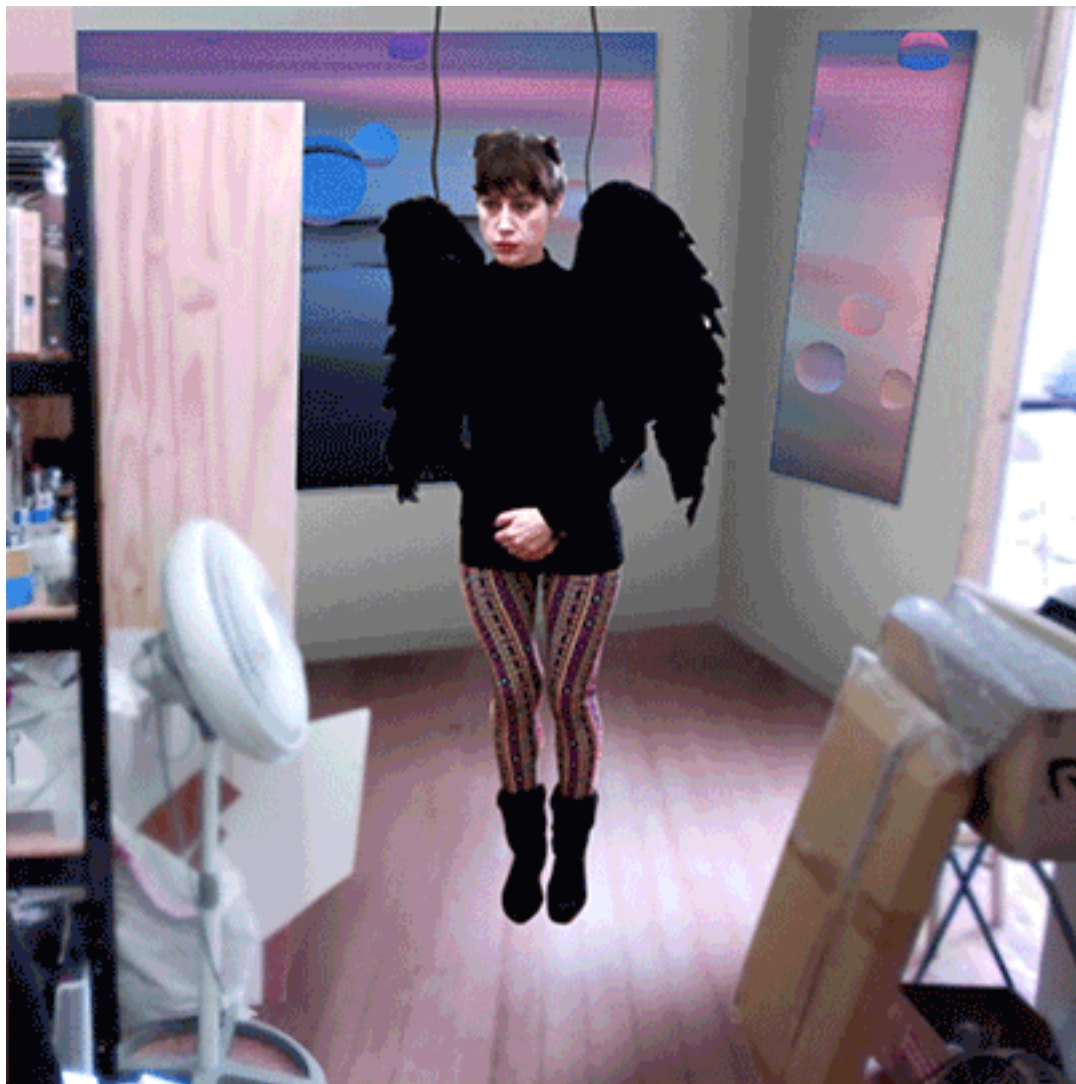


Woman Island

(2016)

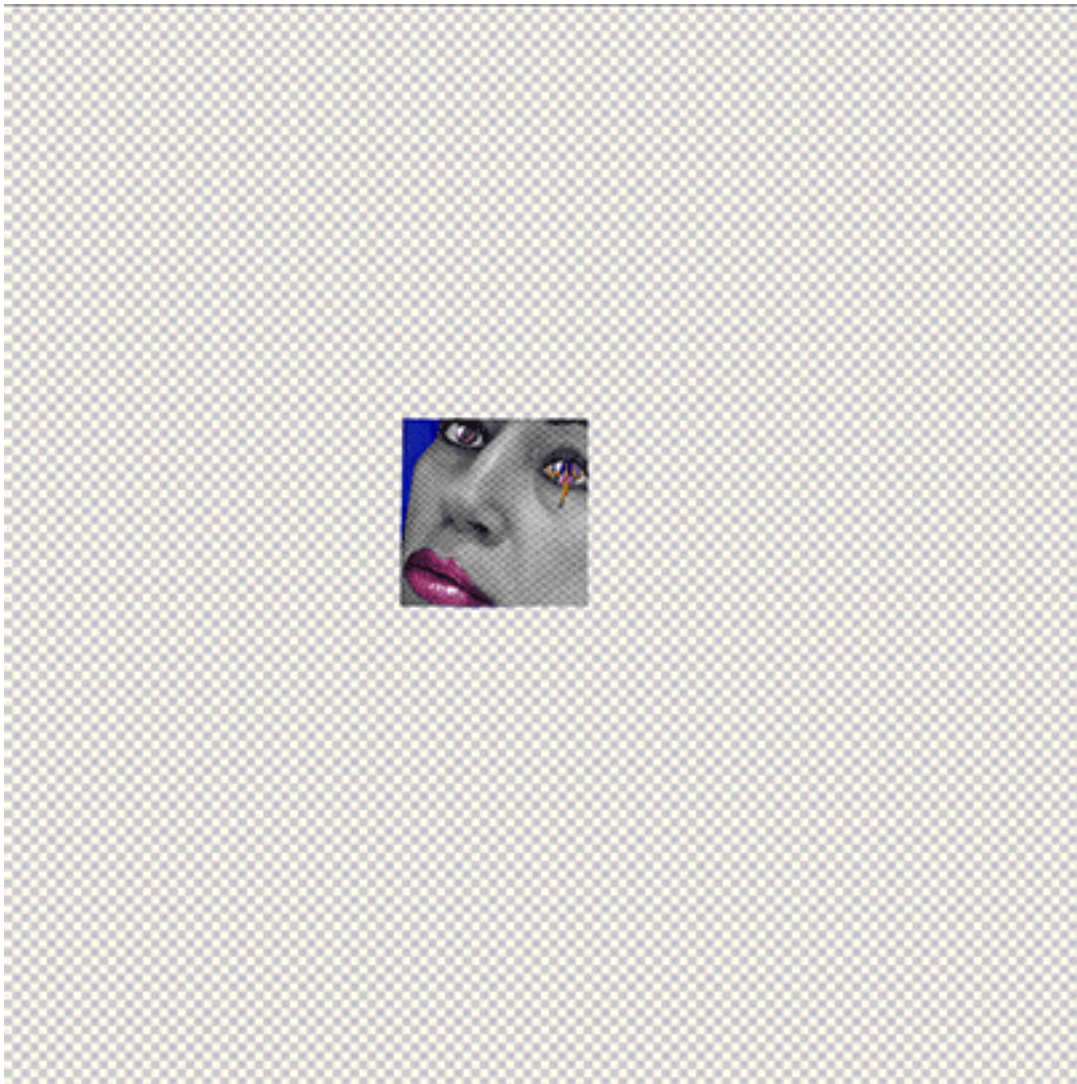


[Carla Gannis Wings 2016 \[1\]](#)



Wings (2016)

[Carla Gannis Anodized Aluminum on a Grid 2016 \[2\]](#)



Anodized Aluminum

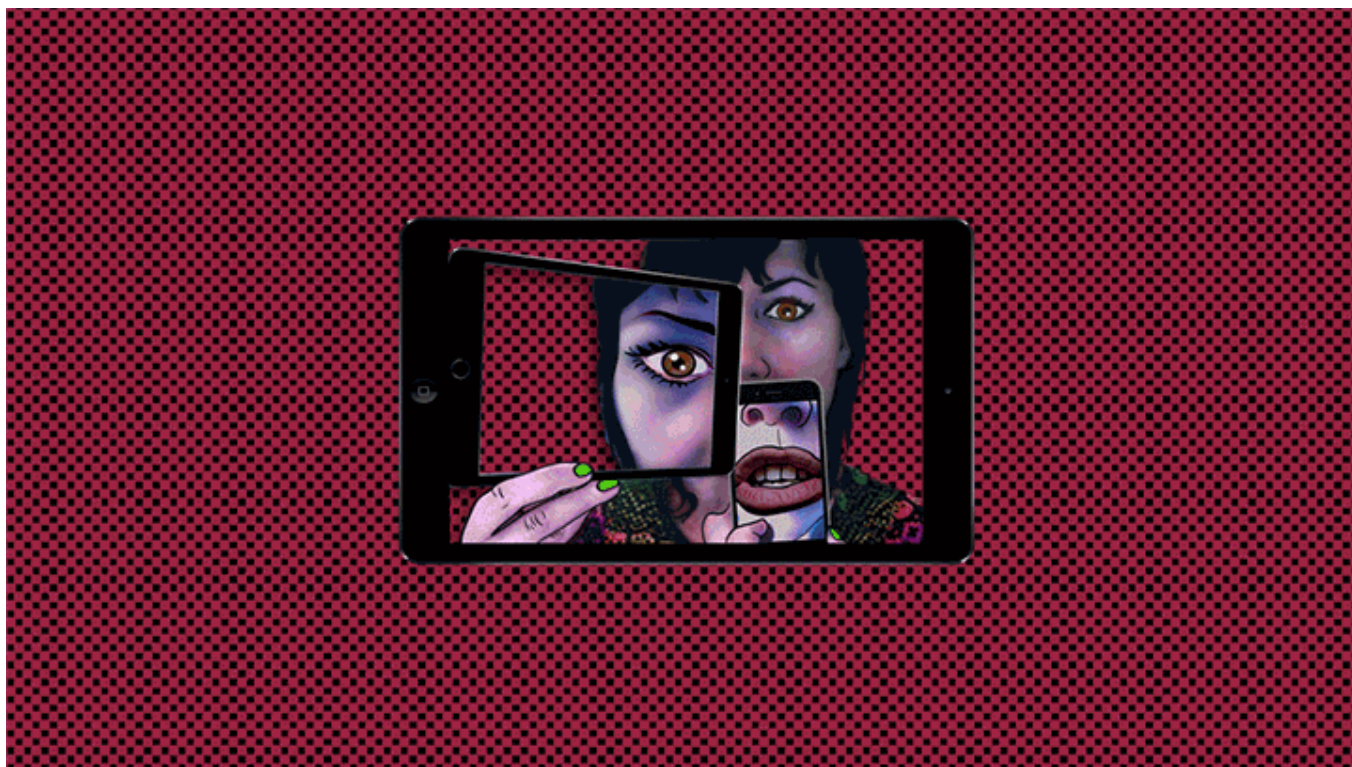
on a Grid (2016)

[Carla Gannis Zelig \(2016\)](#) **[3]**



Zelig (2016)

[Carla Gannis Battering Ram \(2016\)](#) [4]



Battering Ram (2016)

[Carla Gannis Steampunk Glitch \(2016\)](#) [5]



Steampunk Glitch

(2016)

[Carla Gannis To Be Is To Be Human This \(2016\) \[6\]](#)



To Be Is To Be

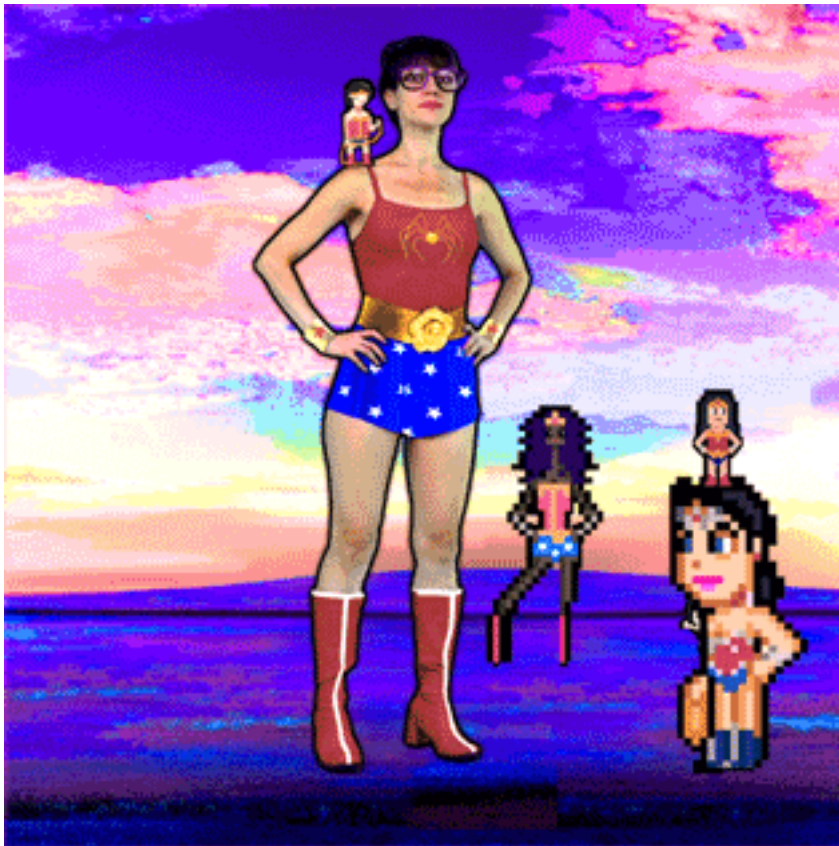
Human This (2016)

[Carla Gannis Babel in Wonderland \(2016\)](#) [7]



Babel in Wonderland (2016)

[Carla Gannis, Peer to Peer \(2016\)](#) [8]



Peer to Peer (2016)

Source URL: <https://tohumagazine.com/article/upon-emergent-occasions>

Links

- [1] <https://tohumagazine.com/file/carla-gannis-wings-2016>
- [2] <https://tohumagazine.com/file/carla-gannis-anodized-aluminum-grid-2016>
- [3] <https://tohumagazine.com/file/carla-gannis-zelig-2016>
- [4] <https://tohumagazine.com/file/carla-gannis-battering-ram-2016>
- [5] <https://tohumagazine.com/file/carla-gannis-steampunk-glitch-2016>
- [6] <https://tohumagazine.com/file/carla-gannis-be-be-human-2016>
- [7] <https://tohumagazine.com/file/carla-gannis-babel-wonderland-2016>
- [8] <https://tohumagazine.com/file/carla-gannis-peer-peer-2016>